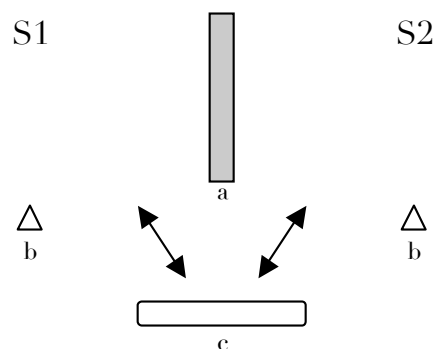


Double-Stops for two string players

Choose two adjacent strings, and one level of dynamic intensity from $\{p, pp, ppp\}$. A series of double-stops begins with the 1st partials (open) of both the chosen strings, followed by the 2nd partials, then 3rd partials, and so on up to at least the 9th partials. Once you have reached the end of your series, choose another pair of adjacent strings and a dynamic, and begin again.

Between double-stops, you may turn your light on or off if you like.

When your light is on, give the other player a clearly visible cue each time your double-stop sounds as only one note, rather than two.



- S1, S2 two string players
- a opaque screen or divider
 - b unidirectional lights, each controlled by the player it faces
 - c mirror, positioned so that each player can see the other; an easel, music stand or chair may be needed to hold the mirror upright

Do not use scores in performance

Each double-stop may, at the most, be played for a full down- and up-bow, at any bow speed. If the other player's light is on, his or her cues indicate the beginning or ending of each of your double-stops; if you complete a double-stop without an ending cue, wait for a cue to begin your next double-stop. If the other player's light is off, pause briefly between each double-stop.

If both lights are on and both players are waiting for a cue to begin, both should pause briefly, then turn their lights off in coordination. Players should agree beforehand on the total number of such moments for a given performance, so that having reached the agreed total, the turning off of lights marks the end of the performance.

-Adam Fong, 2005